

# Texas USAG Xcel State Parent Information

*Lake Whitney the Getaway Capitol of Texas*

Meet Site: Whitney High School  
1400 North Brazos St.  
Whitney, Texas 76692

(Look for directional signs indicating parking and entrance locations)

Admissions - CASH ONLY

Adults \$15.00 / Seniors 60+ \$7.00 / Children 12 & Under \$7.00

No Outside Food or Drink  
Concessions will be available

Places to Eat, Play and Shop  
Stay at Lake Whitney (Rental cabins, houses and RV hookups)  
[www.lakewhitneychamber.com](http://www.lakewhitneychamber.com)

Hotels are available on I-35 just 15 minutes away in Hillsboro, TX



# PARKING

**A - ENTRANCE TO PARKING AREAS**

**B - PARKING AREAS**

**C - PARKING AREA AVAILABLE FOR SATURDAY AND SUNDAY - THIS LOT NOT AVAILABLE ON FRIDAY.**

**D - NO ENTRANCE FOR GYMNASIICS USE "A" ENTRANCES ONLY**

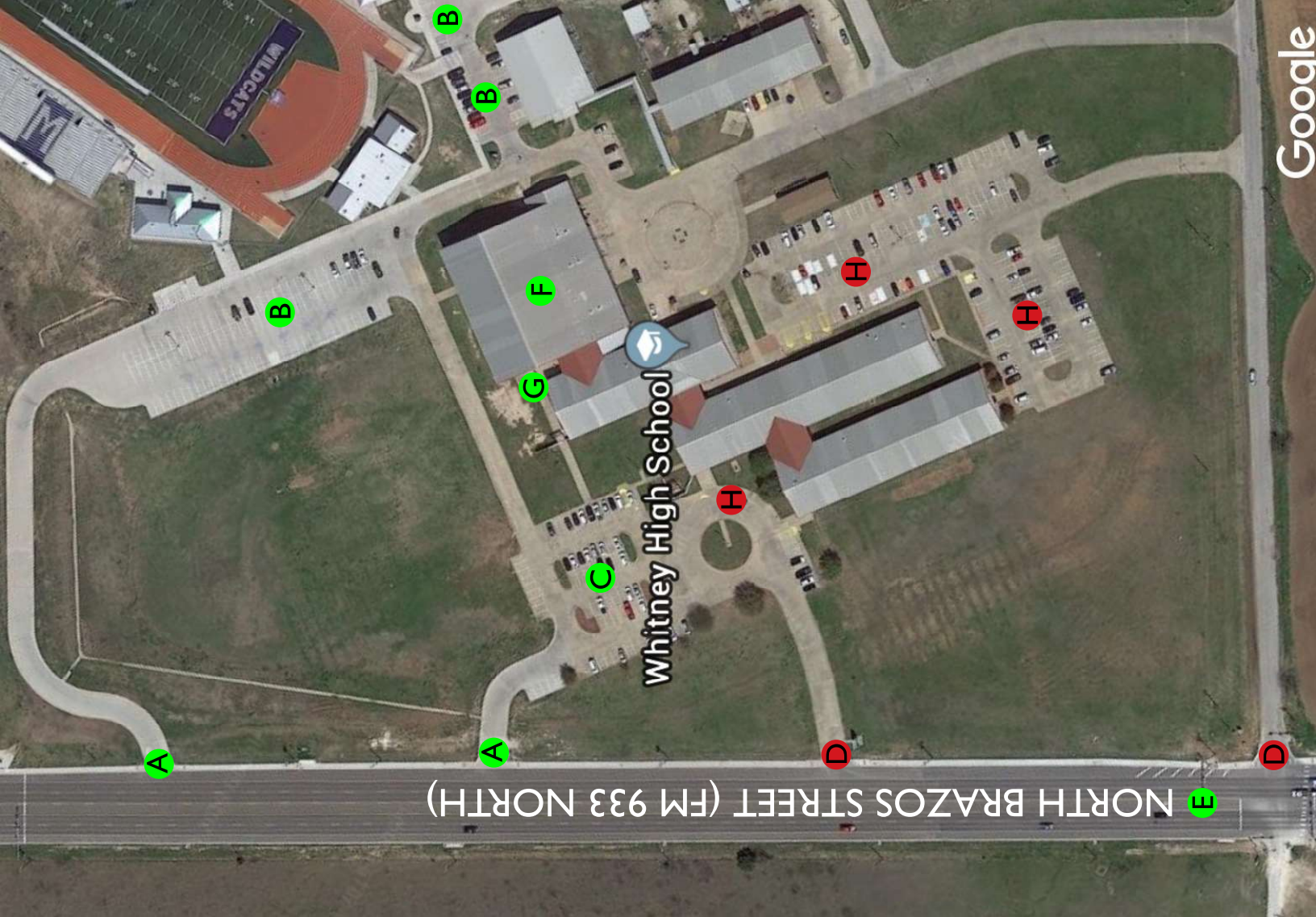
**E - NORTH BRAZOS ST, ALSO CALLED FM 933 NORTH**

**F - HIGH SCHOOL GYM WHERE COMPETITION WILL BE HELD**

**G - ONLY ENTRANCE FOR ATHLETES, COACHES AND SPECTATORS.**

**H - NO PARKING ALL WEEKEND**

\*It is very important that you park ONLY in the designated areas. School is in session on Friday so on that day it is critical that you look for the signs that will clearly indicate which entrances to use. We thank you in advance for your cooperatiomn in order to insure the safety of all our athletes and the students of Whitney High School.



Auxilliary Gym  
Stretch  
Pre-Warmup Beam  
Pre-Warmup FX



BLEACHER STADIUM SEATING  
CAPACITY APPROXIMATELY 900

Scoring  
Judges

Small bleacher  
area for judges  
Judges

Wheelchair  
Seating

Wheelchair  
Seating

